

Thermoregulatory Phenotype of the *Trpv1* Knockout Mouse: Thermoeffector Dysbalance with Hyperkinesia

Andras Garami,¹ Eszter Pakai,¹ Daniela L. Oliveira,¹ Alexandre A. Steiner,¹ Samuel P. Wanner,^{1,2} M. Camila Almeida,¹ Vladimir A. Lesnikov,³ Narendra R. Gavva,⁴ and Andrej A. Romanovsky¹

¹Systemic Inflammation Laboratory, Trauma Research, St. Joseph's Hospital and Medical Center, Phoenix, Arizona 85013, ²Department of Physiology and Biophysics, Federal University of Minas Gerais, Belo Horizonte, Minas Gerais 31270-901, Brazil, ³Fred Hutchinson Cancer Research Center, Seattle, Washington 98109, and ⁴Department of Neuroscience, Amgen, Thousand Oaks, California 91320

This study aimed at determining the thermoregulatory phenotype of mice lacking transient receptor potential vanilloid-1 (TRPV1) channels. We used *Trpv1* knockout (KO) mice and their genetically unaltered littermates to study diurnal variations in deep body temperature (T_b) and thermoeffector activities under basal conditions, as well as thermoregulatory responses to severe heat and cold. Only subtle alterations were found in the basal T_b of *Trpv1* KO mice or in their T_b responses to thermal challenges. The main thermoregulatory abnormality of *Trpv1* KO mice was a different pattern of thermoeffectors used to regulate T_b . On the autonomic side, *Trpv1* KO mice were hypometabolic (had a lower oxygen consumption) and hypervasoconstricted (had a lower tail skin temperature). In agreement with the enhanced skin vasoconstriction, *Trpv1* KO mice had a higher thermoneutral zone. On the behavioral side, *Trpv1* KO mice preferred a lower ambient temperature and expressed a higher locomotor activity. Experiments with pharmacological TRPV1 agonists (resiniferatoxin and anandamide) and a TRPV1 antagonist (AMG0347) confirmed that TRPV1 channels located outside the brain tonically inhibit locomotor activity. With age (observed for up to 14 months), the body mass of *Trpv1* KO mice exceeded that of controls, sometimes approaching 60 g. In summary, *Trpv1* KO mice possess a distinct thermoregulatory phenotype, which is coupled with a predisposition to age-associated overweight and includes hypometabolism, enhanced skin vasoconstriction, decreased thermopreference, and hyperkinesia. The latter may be one of the primary deficiencies in *Trpv1* KO mice. We propose that TRPV1-mediated signals from the periphery tonically suppress the general locomotor activity.

Introduction

The development of new pharmacological and genetic tools to work with the transient receptor potential vanilloid-1 (TRPV1) channel has caused a surge of studies aimed at identifying the roles of this channel in various functions, including the regulation of body temperature (T_b). Studies using pharmacological tools have revealed clear and highly reproducible effects on T_b : TRPV1 agonists cause hypothermia, whereas TRPV1 antagonists cause hyperthermia (for reviews, see Gavva, 2008; Romanovsky et al., 2009). In contrast to the unequivocal results obtained with pharmacological tools, studies in genetically modified animals have failed to reveal a clear thermoregulatory phenotype (Szelé-

nyi et al., 2004; Iida et al., 2005; Christoph et al., 2008; Motter and Ahern, 2008). Szelényi et al. (2004) have reported that *Trpv1* knockout (KO) mice have an exaggerated magnitude of day–night fluctuations in T_b , whereas Iida et al. (2005) have not seen such an exaggeration. Motter and Ahern (2008) have found that *Trpv1* KO mice have an enhanced capacity for cold-induced thermogenesis, whereas Iida et al. (2005) have not seen such an enhancement. Knowing that thermoregulatory responses in mice are notoriously difficult to study (Rudaya et al., 2005), we reexamined the ability of *Trpv1* KO mice to regulate T_b . Because thermoeffectors are regulated independently (Romanovsky, 2007; Morrison et al., 2008; McAllen et al., 2010), we studied several autonomic and behavioral effector mechanisms. Because ambient temperature (T_a) affects many thermoregulatory responses and often determines the pattern of effectors used to regulate deep T_b (Romanovsky et al., 2002), the present study was conducted under tightly controlled thermal conditions. Furthermore, it was verified in each experimental setup used whether the thermal conditions were neutral [i.e., within the thermoneutral zone (TNZ)], subneutral, or supranormal.

Initially, the primary goal of this study was to determine a thermoregulatory phenotype of the *Trpv1* KO mouse. After we found that the absence of the *Trpv1* gene was accompanied by an increased locomotor activity, which is considered to be a thermoregulatory effector in small rodents (Mount and Willmott, 1967; Brown et al., 1991; Weinert and Waterhouse, 1998), we focused

Received Sept. 6, 2010; revised Oct. 25, 2010; accepted Nov. 23, 2010.

This research has been supported by Amgen (study agreements with A.A.R.), the National Institutes of Health (Grant R01NS41233 to A.A.R.), and the National Council for Scientific and Technological Development, Brazil (Visiting Ph.D. Student Fellowship to S.P.W.). We thank Tatiane N. Cooper and Dr. Yury P. Shimansky for the help with the densitometry analysis of thermograms and with statistical analyses, respectively.

N.R.G. is employed by Amgen, Inc. A.A.R. has consulted for Amgen, Inc., and TRP programs at several pharmaceutical companies, and his research has been supported by Amgen, Inc.

Correspondence should be addressed to Andrej A. Romanovsky, Systemic Inflammation Laboratory, Trauma Research, St. Joseph's Hospital and Medical Center, 350 West Thomas Road, Phoenix, AZ 85013. E-mail: aromano@chw.edu.

A. A. Steiner's present address: Department of Pharmaceutical Sciences, Albany College of Pharmacy and Health Sciences, Albany, NY 12208.

M. C. Almeida's present address: Federal University of ABC, Santo Andre, Sao Paulo 09210-170, Brazil.

DOI:10.1523/JNEUROSCI.4671-10.2011

Copyright © 2011 the authors 0270-6474/11/311721-13\$15.00/0

the second part of the study on this novel finding. In pharmacological experiments, we used TRPV1 agonists and a TRPV1 antagonist to investigate the potential involvement of TRPV1 channels in the regulation of locomotor activity. Based on experiments with *Trpv1* KO mice and with pharmacological tools, we propose that tonic activation of peripheral TRPV1 channels suppresses the general locomotor activity. Even though TRPV1 channels are unlikely to be those long-sought thermosensors that respond to skin temperature (T_{sk}) or deep T_b signals to regulate thermoeffector activity (Romanovsky et al., 2009), the tonic, nonthermal activation of TRPV1 channels does modulate several effector responses (Steiner et al., 2007), perhaps in a state-specific manner (Kanizsai et al., 2009). It is likely, therefore, that new mechanisms relevant to the TRPV1-dependent modulation of T_b remain to be discovered.

Materials and Methods

Animals

Physiological experiments were conducted in 293 adult mice of both sexes. Of these, 269 C57BL/6x129 mice were obtained from the Amgen colony at Charles River Laboratories. These mice had the *Trpv1* gene either present (*Trpv1*^{+/+}) or missing (*Trpv1*^{-/-}) due to a targeted null mutation (Caterina et al., 2000). They were produced by breeding *Trpv1*^{+/-} males and females and genotyping their offspring; the breeding and genotyping were performed by Charles River Laboratories at their facilities. Twenty-four additional *Trpv1*^{+/+} mice of a different genotype, C57BL/6, were purchased from Charles River Laboratories. Except for the body mass comparison study, where the mice were observed for an extended period of time (from the age of 4 weeks to the age of 56 weeks), all experiments were performed in male mice with body mass of ~30 g (age of ~17 weeks). The mice were housed in standard “shoebox” cages kept in a Maxi-Miser ventilated rack (Thoren Caging Systems) at a T_a of 27°C. The room was on a 12 h light/dark cycle (lights on at 6:00 A.M.). Tap water and standard (5.0% fat) rodent chow (Laboratory rodent diet 5001; Labdiet) were available *ad libitum*. The body mass of mice was measured regularly with a portable digital scale (model VI-200; Acculab). At the end of the study, we confirmed the absence or presence of functional TRPV1 channels in the KO and control mice, respectively. For this, 24 *Trpv1*^{-/-} and 24 *Trpv1*^{+/+} C57BL/6x129 mice were randomly selected from the study population, food deprived for 36 h, and then exposed to an excessive amount of habanero chili (*Capsicum chinense*). Habanero is one of the hottest chili peppers with a reported pungency of 100,000–300,000 Scoville units (Berkeley and Jacobson, 1992). For a 20 min period, eating events were counted by an observer blind to the mice’s genotype. *Trpv1* KO mice eagerly consumed the peppers, whereas the controls did not ($p < 0.0001$) (Fig. 1).

For all experiments, the mice were extensively handled (8 daily sessions, 5 min each) and then habituated to experimental setups as follows. A mouse designated for an experiment in the telemetry, thermocouple, or respirometry setup (see below, Experimental setups), was adapted to staying in either a Plexiglas enclosure or a wire-mesh confiner (8 training sessions, 1–4 h each). The enclosure, which had a square (15 × 15 cm) base and 25-cm-high walls, did not limit the animal’s movement; it was used for experiments in the telemetry setup. The cylindrical confiner (length, 10 cm; diameter, 3 cm) prevented the animal from turning around but allowed for some back-and-forth movements; it was used in the thermocouple and respirometry setups. A mouse designated for an experiment in the thermogradient setup was adapted to staying in the channels of the thermogradient apparatus (7 sessions, 3–24 h each). During long training sessions (>12 h) the animal had unlimited access to food and water. All protocols were approved by the St. Joseph’s Hospital and Medical Center Animal Care and Use Committee.

Surgical preparations

Anesthesia and perioperative care. Surgeries were performed under ketamine-xylazine-acepromazine (81.7, 9.3, and 1.2 mg/kg, i.p.) anesthesia and antibiotic protection (enrofloxacin, 1.1 mg/kg, s.c.). During surgery, a mouse was heated with a Deltaphase isothermal pad (Braintree

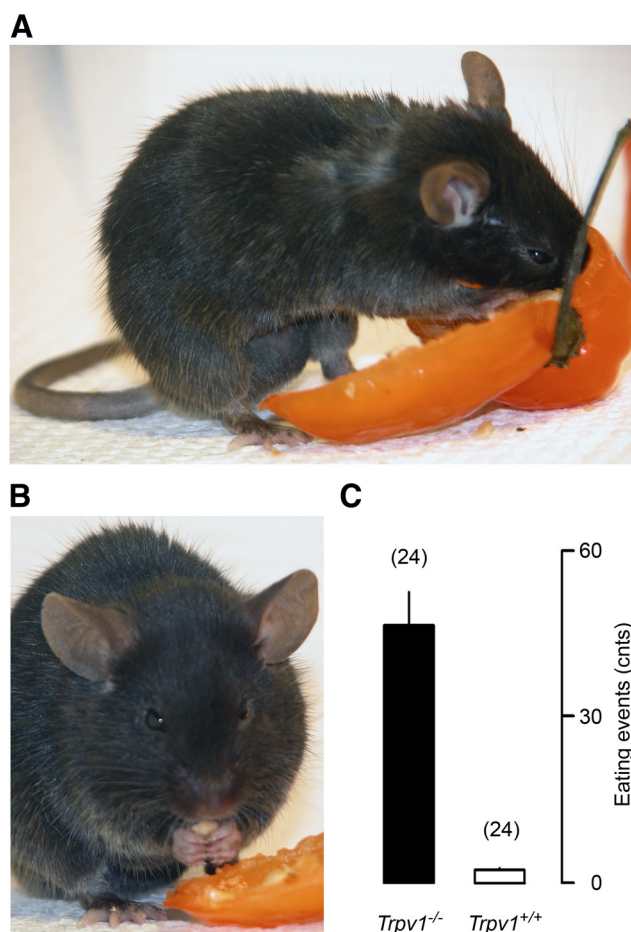


Figure 1. Behavioral verification of TRPV1 deficiency in *Trpv1* KO mice. *Trpv1* KO mice are insensitive to capsaicin and, when food deprived, eagerly consume habanero chili (A), including the hottest parts, such as the septa and seeds (B). The mean number of pepper-eating events in *Trpv1*^{-/-} versus *Trpv1*^{+/+} mice over a 20 min period is also shown (C). Here and in Figures 2, 3, and 5–10, numbers in parentheses are the numbers of animals in the corresponding groups.

Scientific) and periodically (every 5 min) ventilated with oxygen through a custom-made mask. The isothermal pad was placed either under a surgery board (Plas-Labs) or on the base of a stereotaxic apparatus. For immediate postoperative recovery, the mouse was placed in a climatic chamber set to a T_a of 31.0°C. Experiments were performed 5–7 d after surgery.

Implantation of temperature-measuring devices. If the mouse was designated for an experiment in the telemetry setup, it was implanted with a miniature telemetry transmitter (G2 E-Mitter series; Mini Mitter) to record abdominal temperature (T_{ab} , a measure of deep T_b) and gross locomotor activity. If the mouse was designated for an experiment in the thermogradient setup, it was implanted with a miniature temperature datalogger (Subcue Dataloggers) to record and store T_{ab} data. Either device was inserted into the peritoneal cavity via midline laparotomy and fixed to the lateral abdominal wall (right side) with a suture. The surgical wound was sutured in layers.

Intraperitoneal catheterization. For the intraperitoneal administration of drugs, a silicone catheter filled with pyrogen-free saline was inserted into the peritoneal cavity through the same opening in the abdominal wall that was used to insert a temperature-measuring device, and the internal end of the catheter was attached with a suture to the lateral abdominal wall on the left side. The free end of the catheter was knotted, tunneled under the skin to the nape, and exteriorized. The catheter was flushed with saline on the day after surgery and every other day thereafter.

Intracerebroventricular cannulation. For the intracerebroventricular drug administration, a 22 ga steel guide cannula (Plastics One) was im-

Table 1. Experimental setups

Setup	Measures of deep body temperature (T_b) and thermoeffector activities studied		Neutral ambient temperature (T_a , °C) ^e
	T_b	Thermoeffector activities	
Telemetry	Abdominal (T_{ab})	Gross locomotor activity (measured as frequency of probe movement) Tail skin vasomotion (measured as tail skin temperature, T_{sk} , by thermocouple thermometry or as radiant T_{sk} by infrared thermography)	31.0
Thermocouple	Colonic (T_c)	Thermogenesis (measured as rate of oxygen consumption, V_{O_2}), tail skin vasomotion (T_{sk})	32.0 ^b
Respirometry	T_c	Selection of preferred T_a , locomotor activity (measured as velocity of longitudinal locomotion)	33.0 ^c
Thermogradient	T_{ab}		27.0 ^d

^aFor each setup, the table lists one T_a that has been shown to be within the TNZ for $Trpv1^{+/+}$ C57BL/6 mice in that setup. ^bFor the lower and upper limits of the TNZ for $Trpv1^{-/-}$ and $Trpv1^{+/+}$ C57BL/6x129 mice in the thermocouple setup, see Results. ^cNote that T_a in the respirometry setup was measured inside the environmental chamber but outside the metabolic chamber. ^dFor the values of preferred T_a for $Trpv1^{-/-}$ and $Trpv1^{+/+}$ C57BL/6x129 mice in the thermogradient setup, see Results.

planted into the right lateral brain ventricle using the stereotaxic atlas by Lesnikov and Tsvetkova (1985) and their original stereotaxic apparatus. The head of a mouse was fixed in the stereotaxic apparatus; the scalp was incised over the sagittal suture; the periosteum was excised; the bone surface was cleaned; and three supporting microscrews were driven into the skull. The position of the head of the mouse was then adjusted so that bregma was located 0.5 mm higher than lambda, and a hole was drilled 0.5 mm posterior to bregma and 1.0 mm right of the sagittal suture. The guide cannula with a 28 ga dummy injector inside was inserted into the lateral ventricle by lowering the tip of the injector (which protruded the cannula by 1.0 mm) 3.0 mm below the skull surface. The cannula was affixed to the supporting microscrews with acrylic cement. At the end of the experiments, a correct placement of each cannula was confirmed by anesthetizing the animal, infusing 3 μ l of an aqueous solution of methylene blue (6 mg/ml) through the cannula, removing the brain, and examining coronal sections macroscopically for the presence of the dye in the ventricular system.

Experimental setups

Experiments were conducted in one of the following setups: the telemetric thermometry (“telemetry”) setup, the thermocouple thermometry (“thermocouple”) setup, the thermocouple thermometry with respirometry (“respirometry”) setup, and the thermogradient setup (Table 1). All experiments, unless specified otherwise, were conducted under thermo-neutral conditions. Because the same animal has a different TNZ in each setup (Romanovsky et al., 2002), the setups were used at different T_a s (Table 1). In these setups, we measured deep T_b [as either T_{ab} or colonic temperature (T_c)] and four thermoeffector activities, two autonomic and two behavioral (Table 1). On the autonomic side, we measured tail skin vasomotion (assessed by tail skin temperature, T_{sk}) and the rate of oxygen consumption (V_{O_2}). On the behavioral side, we measured the preferred T_a and general locomotor activity. The latter has been shown repeatedly to play an important thermoregulatory role in small rodents such as rats and mice (Mount and Willmott, 1967; Brown et al., 1991; Weinert and Waterhouse, 1998) and is now widely viewed as a thermoregulatory effector in these species (Kanizsai et al., 2009; Hunt et al., 2010; Szentirmai et al., 2010). The locomotor activity was measured in this study either as the velocity of longitudinal movement in the thermogradient apparatus or as the frequency of changes of the position or orientation of the implanted telemetry probe in the telemetry setup.

Telemetry setup. Telemetry receivers (model ER-4000; Mini Mitter) were positioned inside a climatic chamber (model 3940; Forma Scientific). The home cage of each mouse was placed on top of a receiver; a Plexiglas enclosure was placed inside the cage; and the mouse was left in the enclosure. The mouse was preimplanted with a telemetry transmitter (to measure T_{ab} and locomotor activity). In a subset of mice, the transmitter was implanted in combination with either an intraperitoneal catheter or an intracerebroventricular cannula for drug administration. If the mouse had an intraperitoneal catheter, the catheter was extended with a length of polyethylene-50 tubing filled with a drug of interest. This extension was passed through a wall port of the climatic chamber and connected to a syringe placed in an infusion pump (model KDS 220; KD Scientific). Whereas most experiments in this setup were conducted at a neutral T_a of 31.0°C (Table 1), a subneutral T_a of 26.0°C was used when the expected experimental outcome was a decrease in T_b , e.g., in experiments with administration of TRPV1 agonists (Hori, 1984; Romanovsky et al., 2009).

We had a concern that measuring locomotor activity with G2 telemetry probes might overestimate any meaningful locomotion, because this method picks up changes not only in the position of the probe relative to the receiver, but also in the probe orientation. Hence, there was a possibility that breathing movements, intestinal peristalsis, yawning, coughing, shivering, and similar activities may contaminate the results or even mask any changes in true whole-body locomotion. To address this concern, we conducted a separate series of experiments. We mounted a motion sensor (Infrared Cage Top Motion Sensor; Mini Mitter), which works with Mini Mitter hardware and software, on each Plexiglas enclosure and simultaneously recorded locomotor activity with the implanted G2 probes and with the external motion sensors. The external sensor-based method is completely insensitive to any probe movement inside the peritoneal cavity, and requires a true body movement to register an activity event. Two groups of $Trpv1^{+/+}$ C57BL/6x129 and two groups of $Trpv1^{+/+}$ C57BL/6 mice were injected intraperitoneally with either resiniferatoxin (RTX) or anandamide (AEA), or with their vehicle, as described below. In all four groups, the activity curves obtained by the two methods looked nearly identical (see Notes). When the obtained activity curves were analyzed by two-way ANOVA (following a linear unit transformation), no significant differences were found in any group. These experiments confirm that the telemetric activity measure is a reliable indicator of locomotor activity.

Thermocouple setup. A mouse equipped with copper-constantan thermocouples (Omega Engineering) to measure T_c and T_{sk} was placed in a confiner. The colonic thermocouple was inserted 2 cm beyond the anal sphincter and fixed to the base of the tail with a loop of adhesive tape. The skin thermocouple was positioned on the lateral surface of the tail (at the boundary of the proximal and middle thirds) and insulated from the environment with tape. The thermocouples were plugged into a data logger (Cole-Parmer). The confiner with the mouse inside was transferred to a climatic chamber. Whereas most experiments in this setup were conducted at a neutral T_a of 32.0°C (Table 1), this setup was also used for heat-exposure experiments, in which T_a was raised from 31.0 to 39.0°C over ~30 min and then maintained at 39.0°C.

In a separate series of experiments, thermocouples were not used, and radiant T_{sk} was monitored by infrared thermography with a ThermoVision A20M camera (FLIR Systems) to assess the vasomotor tone of the tail skin and to determine the TNZ (Romanovsky et al., 2002). The ThermoVision camera was positioned above a group of confined mice inside the climatic chamber set to T_a randomly selected from the following list: 30.0, 30.5, 31.5, 32.0, 32.5, 33.0, 33.5, or 35.0°C. The mice were kept at this T_a for ~2 h, and infrared thermograms were taken. Thereafter, T_a was changed in a stepwise fashion to another value from the same list and maintained at this new level for ~2 h. Infrared thermograms of the mice were taken again, and a new T_a was chosen. Usually, three to four temperatures were studied in the same experiment.

Respirometry setup. Each mouse was equipped with thermocouples as for experiments in the thermocouple setup. Then each mouse in its confiner was placed inside a cylindrical Plexiglas chamber (Sable Systems), which was sealed. The Plexiglas chambers with mice inside were kept in a climatic chamber and continuously ventilated. The airflow was maintained at 600 ml/min with the help of a mass flow controller (Sierra Instruments). The air leaving each chamber was automatically sampled, dried, and passed through an oxygen analyzer (Sable Systems). The rate

of V_{O_2} was calculated by comparing the oxygen fraction in the air exiting the chamber occupied by a mouse to the oxygen fraction in the air exiting an empty chamber (see below, Data processing and analysis). Whereas most experiments in this setup were conducted at a neutral T_a of 33.0°C (Table 1), this setup was also used for exposing mice to cold. Cooling was performed by decreasing T_a in the climatic chamber from 33.0°C to 5.0°C over 150 min.

Thermogradient setup. The thermogradient apparatus used has been described in detail previously (Almeida et al., 2006). The apparatus consisted of six 200-cm-long aluminum channels. Each channel had a second (inner) stainless-steel grid floor and an acrylic double-wall lid at the top. At each end, all channels shared a common aluminum wall, which separated the channels from a large tank. The tank at the “warm” end of the channels was filled with water warmed with two electric heating units (PolyScience) to maintain T_a inside the channels at this end at 30.0°C. The tank at the “cold” end was constantly perfused with 10% ethylene glycol by an external-circulation cooling/heating pump (PolyScience) to maintain T_a inside the channels at this end at 20.0°C. In this setting, all channels had a common, nearly linear longitudinal T_a gradient of 0.05°C/cm. The position of a mouse in a channel of the thermogradient apparatus was monitored with 56 evenly spaced (3.5 cm) infrared emitter-receiver pairs, which formed transversal infrared beams. This system also allowed us to directly measure the longitudinal locomotor activity. By knowing how the position of an animal changed in time (as the animal crossed the beams), we knew the velocity of the longitudinal movement (distance traveled divided by time).

Drugs and drug administration

RTX, a highly potent TRPV1 agonist, was purchased from Sigma-Aldrich. An ethanolic stock solution of RTX (200 μ g/ml) was prepared, aliquoted, and stored at -80°C . On the day of the experiment, the stock was diluted with ethanol and saline to achieve a final concentration of RTX of 6, 60, or 150 ng/ml and a final concentration of ethanol of 10%. For the intraperitoneal administration, this working solution (or the vehicle) was injected acutely, as a bolus (3.3 ml/kg), using a 26 ga needle. For the intracerebroventricular administration, the same working solution of RTX (or the vehicle) was infused (1.5 μ l/min) over a 2 min period. At these infusion volumes and rates, even much higher concentrations of ethanol (50%) do not cause behavioral responses or changes in T_b (Steiner et al., 2007). For the infusion, the dummy injector (mandrin) was removed from the preimplanted guide cannula and replaced with a 28 ga injector needle (Plastics One) connected to a 25 μ l Hamilton syringe by a polyethylene-50 extension. The injector needle protruded 1.0 mm beyond the tip of the guide cannula. At the end of the infusion, the injector was held in place for an additional 1 min and then removed and replaced with the mandrin.

AEA (arachidonoyl *N*-ethanolamide), purchased from Tocris Bioscience, was used in the present study as a TRPV1 agonist (Zygmunt et al., 1999; Smart et al., 2000). An ethanolic solution of AEA (5 mg/ml) was stored at -20°C . On the day of the experiment, the stock was diluted with ethanol and saline to achieve a final concentration of AEA of 0.5 mg/ml in 10% ethanol. This working solution of AEA (15 mg/kg) or the vehicle (10% ethanol) was injected intraperitoneally as a bolus at a total volume of 30 ml/kg. Because one of the expected outcomes of experiments with TRPV1 agonists was a decrease in the gross locomotor activity (Crawley et al., 1993; Fride and Mechoulam, 1993; Smith et al., 1994; Di Marzo et al., 2001; Wiley et al., 2006), RTX and AEA (or their vehicles) were administered acutely by briefly restricting the animal, pricking it with a needle, bolus injecting the drug, and then releasing the animal. In this paradigm, the handling and needle pricking associated with drug administration elevate the low, near-zero activity typical for habituated mice during the light (inactive) phase.

AMG0347, a highly potent and selective TRPV1 antagonist (Steiner et al., 2007), was provided by Amgen. Aliquots of an ethanolic solution of AMG0347 (3.5 mg/ml) were stored at -80°C . On the day of the experiment, the stock solution was diluted with ethanol and saline to achieve a final concentration of AMG0347 of 15 μ g/ml in 50% ethanol. AMG0347 (50 μ g/kg) or its vehicle was administered intraperitoneally as a bolus (3.3 ml/kg) via a preimplanted catheter. The expected outcome in experiments with AMG0347 was an increase in the locomotor activity. To avoid stress hyperkinesia in these experiments, we used a nonstressful method of intraperitoneal drug administration via a preimplanted cannula.

Data processing and analysis

The rate of V_{O_2} was calculated by comparing the oxygen fraction in the air exiting the chamber occupied by a mouse (F) to the oxygen fraction in the air exiting an empty chamber (F_0):

$$V_{O_2} = \frac{A(F_0 - F)}{M - F_0M(1 + Q)}$$

where A was air flow, Q was the respiratory quotient (considered to be 0.71), and M was the animal's mass (Steiner et al., 2007).

All data collected as time series were compared across genotypes and time points by two-way ANOVA with a Fisher LSD *post hoc* test, as appropriate. These included the data on deep T_b (whether T_{ab} or T_c), measures of thermoeffector activities (i.e., tail T_{sk} , V_{O_2} , preferred T_a , and gross locomotor activity), and body mass. For a statistical analysis of the tail images on the infrared thermograms obtained, the optical density was determined for each image by using the VisionWorks 6.5.2 image acquisition and analysis software (Ultra-Violet Products). The optical density values were also compared by two-way ANOVA across genotypes and T_a s. All data collected as single-point measurements (chili pepper eating events) or presented as a single number (light-phase mean, dark-phase mean, and daily mean values of T_b measures and those of effector activity measures) were compared between the genotypes by Student's *t* test. All analyses were performed using Statistica AXA 8.0 (Statsoft). The data are reported as means \pm SE.

Results

Phase-specific changes in deep T_b of *Trpv1* KO mice

To identify a thermoregulatory phenotype of the *Trpv1* KO mouse, we studied circadian fluctuations in deep T_b and thermoeffector activities of a large number of *Trpv1*^{-/-} and *Trpv1*^{+/+} mice in three experimental setups: thermogradient (Fig. 2A), telemetry (Fig. 2B), and respirometry (Fig. 2C). In all three setups, the light-phase mean deep T_b of *Trpv1* KO mice was slightly (by 0.2–0.7°C) but significantly lower than that of the controls (Fig. 2A–C). A similar difference in T_b between the KO and control mice was found under basal conditions (before any drug administration) in several other experiments in this study (Table 2). During the dark (active) phase, however, the intergenotype T_b difference was attenuated (respirometry setup) (Fig. 2C) or completely disappeared (telemetry setup) (Fig. 2B). In the thermogradient setup (Fig. 2A), this difference became reversed, that is, the mean dark-phase T_{ab} of the KO mice was 0.5°C higher than that of the controls ($p < 0.05$). As the result of such biphasic dynamics, the daily mean T_b of *Trpv1* KO mice was either similar to or slightly lower than that of the controls in all setups (Fig. 2A–C). The magnitude of day–night changes in T_b of the *Trpv1* KO mice was increased compared to that of the controls in the thermogradient setup (0.8 ± 0.2 vs $0.2 \pm 0.1^\circ\text{C}$; $p < 0.05$) and in the telemetry setup (1.0 ± 0.1 vs $0.5 \pm 0.1^\circ\text{C}$; $p < 0.01$). It also had a tendency to be increased in the respirometry setup (0.5 ± 0.1 vs $0.2 \pm 0.2^\circ\text{C}$; $p < 0.1$). In summary, our results agree with studies by others (Szelényi et al., 2004; Iida et al., 2005) showing that *Trpv1* KO mice have only slight alterations in the level at which their deep T_b is regulated throughout the day, as compared to control mice. Furthermore, these alterations are phase specific and, to some extent, depend on the experimental setup.

Trpv1 KO mice exhibit a distinct thermoeffector pattern

What differed drastically between the two genotypes in our study was not the level of T_b , but the pattern of behavioral and autonomic effectors used to regulate T_b . We studied two behavioral and two autonomic effectors (Table 1). Behavioral effector activities included the “classic” selection of preferred T_a and the gross locomotor activity (Fig. 3A). The autonomic effector activities

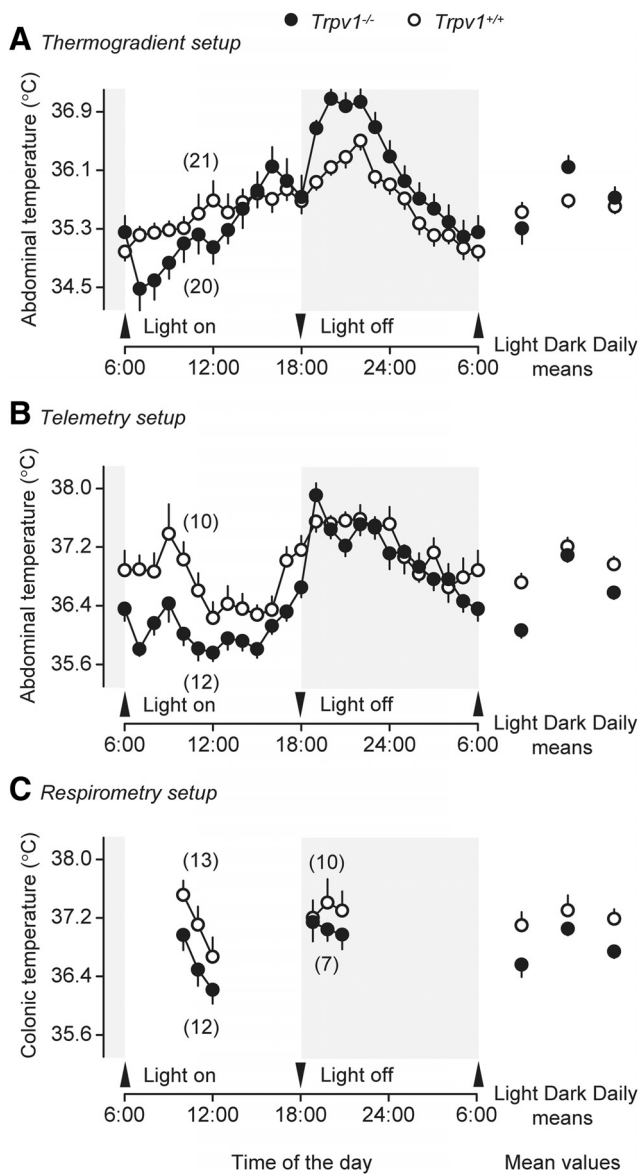


Figure 2. During the inactive (light) phase, *Trpv1* KO mice have a lower deep T_b than their genetically unaltered counterparts in the thermogradient (A), telemetry (B), and respirometry (C) setups.

Table 2. Basal deep body temperature (30 min mean \pm SE) of *Trpv1^{+/+}* and *Trpv1^{-/-}* mice in different experimental setups during the light phase

Experimental setup	Ambient temperature (°C)	Basal body temperature (°C), n	
		<i>Trpv1^{+/+}</i>	<i>Trpv1^{-/-}</i>
Telemetry	31.0	36.7 \pm 0.1 n = 32	36.3 \pm 0.1 ^a n = 35
	28.0	36.4 \pm 0.1 n = 14	36.1 \pm 0.1 ^b n = 14
Thermocouple	32.0	37.1 \pm 0.3 n = 6	37.3 \pm 0.2 n = 6
Respirometry	33.0	36.8 \pm 0.2 n = 13	36.3 \pm 0.2 ^a n = 12
Thermogradient	20.0–30.0	35.8 \pm 0.3 n = 21	35.0 \pm 0.2 ^a n = 20

^a $p < 0.05$; ^b $p < 0.1$.

included thermogenesis (measured as V_{O_2}) and tail skin vasomotor tone (measured as T_{sk}) (Fig. 3B). All four effector activities were reproducibly altered in the setups studied. On the behavioral side, *Trpv1* KO mice selected a lower T_a than their *Trpv1^{+/+}*

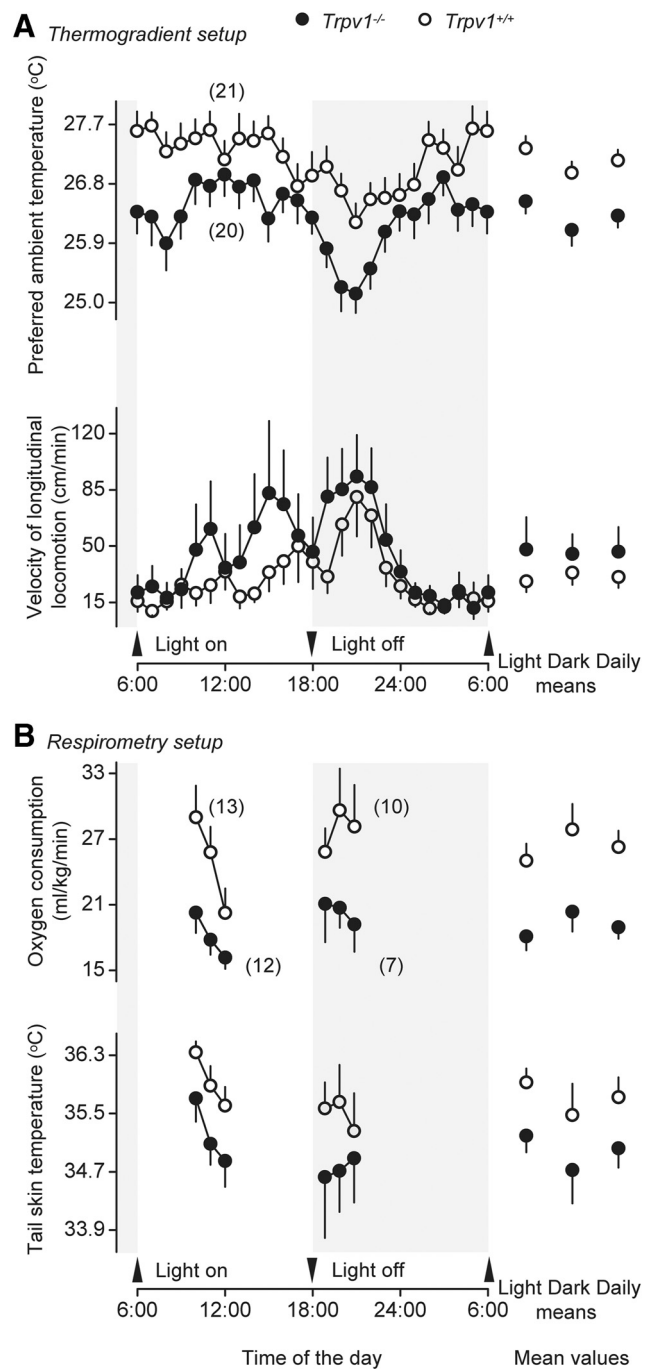


Figure 3. Compared to genetically unaltered controls, *Trpv1* KO mice regulate T_b by using a different thermoeffector pattern. In the thermogradient setup (A), they prefer a lower T_a and are hyperactive. In the respirometry setup (B), they are hypometabolic (have a lower V_{O_2}) and vasoconstricted (have a lower tail T_{sk}).

counterparts (daily means of 26.3 ± 0.2 vs $27.2 \pm 0.2^\circ\text{C}$, respectively; $p < 0.01$), regardless of the phase. *Trpv1* KO mice also expressed a higher locomotor activity, especially during the light phase. Although the mean velocities during the light phase, the dark phase, or the entire day did not differ statistically between the genotypes (Student's t test), the 24 h activity curves were significantly different (ANOVA, $p < 0.01$). From the biological point of view, the magnitude of the effect was remarkable: at one time point during the inactive phase (3:00 P.M.), *Trpv1* KO mice were moving in the thermogradient with an average linear veloc-

ity of 85 cm/min (>1.2 km/d), which was ~3 times higher than the average speed of wild-type mice at the same time of day. Furthermore, it was higher than the locomotion speed of wild-type mice at any time, including the peak of their activity at night. When we measured autonomic thermoeffector activity in the respirometry setup, we found that *Trpv1* KO mice maintained a lower metabolic rate and exhibited a more pronounced cutaneous vasoconstriction than the controls, regardless of the phase. The means for V_{O_2} and T_{sk} for the KO versus control mice were 18.9 ± 1.0 versus 26.3 ± 1.3 ml/kg/min ($p < 0.0001$) and 35.0 ± 0.2 versus $35.7 \pm 0.2^\circ\text{C}$ ($p < 0.05$), respectively. The difference in V_{O_2} recorded was not contaminated by the tendency of the two genotypes to have different levels of locomotor activity, as these experiments were performed in restrained animals. In summary, under basal conditions, *Trpv1* KO mice have a thermoregulatory phenotype that reveals itself in a distinct thermoeffector pattern. These mice are prone to select a cooler environment; they are also hyperactive, hypometabolic, and vasoconstricted.

Trpv1 KO mice have a higher TNZ

The TNZ can be defined as a T_a range in which regulation of deep T_b is achieved primarily by changing the vasomotor tone in specialized heat-exchange organs, such as the mouse or rat tail (Romanovsky et al., 2002). Below the TNZ, rodent tails exhibit continuous skin vasoconstriction. Above the TNZ, they show continuous skin vasodilation. Within the TNZ, the tone of tail skin vasculature changes between moderate constriction and moderate dilation and exhibits a high intrasubject and intersubject variation (Romanovsky et al., 2002; Rudaya et al., 2005; Almeida et al., 2006). The fact that *Trpv1* KO mice exhibited stronger tail skin vasoconstriction at T_a of 33.0°C in the respirometry setup (Fig. 3B), warranted further investigation. Hence, we assessed the TNZ of *Trpv1*^{-/-} and *Trpv1*^{+/+} C57BL/6x129 mice in the thermocouple setup by measuring radiant tail T_{sk} by infrared thermography. At a high T_a of 35.0°C (Fig. 4A), the tails of all mice studied were strongly and uniformly vasodilated. Under these conditions, T_{sk} was approaching deep T_b and was substantially higher than T_a , which made the tails readily visible on the thermograms. In contrast, the tails of all mice were strongly vasoconstricted at a low T_a of 30.0°C (Fig. 4H). Under these conditions, T_{sk} was approaching T_a , which made the tails invisible on the thermograms. At all T_a s between 30.0 and 35.0°C , the extent of tail skin vasodilation/vasoconstriction varied between the animals, and *Trpv1*^{-/-} mice always showed stronger vasoconstriction than their *Trpv1*^{+/+} counterparts. At some T_a s (e.g., 32.0°C) (Fig. 4E), the tails of all *Trpv1* KO mice were invisible (T_{sk} close to T_a), whereas the tails of all controls were readily visible ($T_{sk} > T_a$). In this case the intergenotype difference in T_{sk} exceeded 4°C , which cannot be explained by a small difference in the deep T_b and indicates unequivocally a difference in the tail skin vasomotor tone. All control mice showed profound tail skin vasoconstriction at $T_a < 30.5^\circ\text{C}$ and profound vasodilation at $T_a > 32.0^\circ\text{C}$, thus suggesting that their TNZ in the setup studied was somewhere between 30.5 and 32.0°C . In the same setup, all *Trpv1* KO mice showed profound tail skin vasoconstriction at $T_a < 31.5^\circ\text{C}$ and profound vasodilation at $T_a > 33.5^\circ\text{C}$, thus suggesting that their TNZ in this setup was somewhere between 31.5 and 33.5°C . To assess the extent of vasodilation quantitatively, we determined the optical density value for each tail image shown in Figure 4. An analysis of these values (two-way ANOVA) showed that the effect of the genotype was highly significant ($p = 0.0001$). Hence, *Trpv1* KO mice have a higher TNZ than wild-type mice.

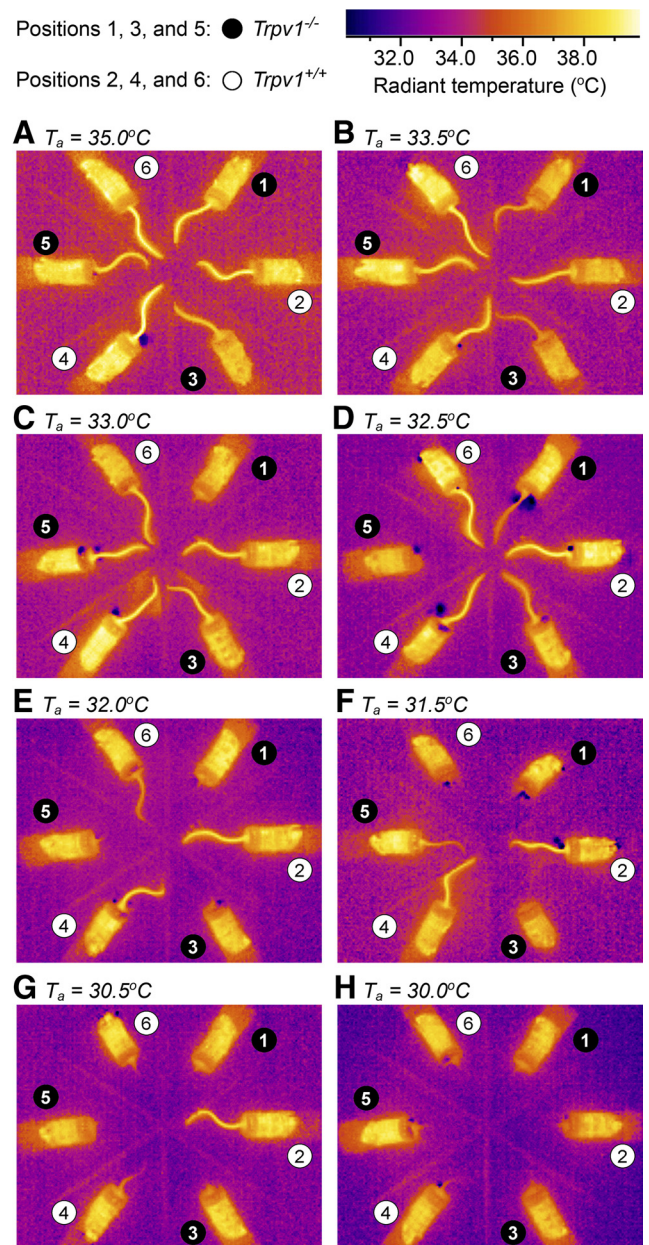


Figure 4. *Trpv1* KO mice have a higher TNZ. Three *Trpv1* KO and three control mice in their confiners were situated in the thermocouple setup as slices of a pizza pie, so that their tails pointed to the center of the “pizza.” In this setup, infrared thermograms were taken at different T_a s: 35.0°C (A), 33.5°C (B), 33.0°C (C), 32.5°C (D), 32.0°C (E), 31.5°C (F), 30.5°C (G), and 30.0°C (H). It is known (see Results) that tails of rats and mice exhibit continuous skin vasodilation above the TNZ and continuous skin vasoconstriction below the TNZ. Note that all tails are clearly visible (vasodilated) at the highest T_a (A) and completely invisible (vasoconstricted) at the lowest T_a (H). As T_a decreases (from B to G), *Trpv1* KO mice become vasoconstricted faster than wild-type mice. Because within the TNZ, the tone of tail skin vasculature constantly changes between moderate constriction and moderate dilation and exhibits a high intrasubject and intersubject variation (Romanovsky et al., 2002), we conclude that the TNZ in this setup is 31.5 – 33.5°C for *Trpv1* KO mice and 30.5 – 32.0°C for the controls.

The thermoregulatory response of *Trpv1* KO mice to heat is unaltered

After we found that tail skin vasomotor tone was altered in *Trpv1* KO mice (Figs. 3B, 4), we studied the thermoregulatory response of these mice to ambient heating. To reveal even a small deficiency in heat defenses, we used a severe heat exposure model that results in a $\sim 3^\circ\text{C}$ rise in deep T_b . When exposed to heat, the mice

of both genotypes (*Trpv1*^{-/-} and *Trpv1*^{+/+}) responded with rapid, near-maximal tail skin vasodilation with T_{sk} approaching 40°C (Fig. 5A). Neither the T_{sk} response nor the T_c response differed between the genotypes. Hence, despite the strong attenuation of heat-induced tail skin vasodilation reported in rats desensitized pharmacologically with TRPV1 agonists (for reviews, see Hori, 1984; Romanovsky et al., 2009), *Trpv1* KO mice are fully capable of increasing heat loss through their tails and defending their deep T_b against heat. These results confirm the earlier observations by Széleányi et al. (2004) and Iida et al. (2005) showing that autonomic heat defenses of *Trpv1* KO mice are not compromised.

Trpv1 KO mice can maintain cold-induced thermogenesis longer than genetically unaltered controls

To reveal even a small deficiency in cold defenses, we used a severe cold exposure model that results in a pronounced drop in deep T_b . When exposed to cold in this model, the mice of both genotypes responded with tail skin vasoconstriction (a decrease in T_{sk}) and cold-induced thermogenesis (an increase in V_{O_2}), but despite these cold-defense responses, their T_c decreased by >14°C (Fig. 5B). The response dynamics differed between the two genotypes. Whereas V_{O_2} of *trpv1* KO mice reached a plateau at ~60 min after the beginning of cold exposure and was then maintained at this level until the end of the experiment (150 min), V_{O_2} of the controls reached the same level, but then started decreasing at ~100 min ($p < 0.0001$) and caused a corresponding decrease in T_c ($p < 0.0001$). These data show that even though *Trpv1* KO mice have a lower metabolic rate under basal conditions, they can maintain cold-induced thermogenesis for a somewhat longer period of time than genetically unaltered mice. An earlier study by Iida et al. (2005) did not find a difference in the thermoregulatory response of *Trpv1* KO mice to cold, but the authors used a much milder cold exposure. The combination of physical factors affecting the heat exchange between an animal and its environment (T_a , air humidity, air velocity, etc.) together with the use of confinement in our experimental paradigm resulted in a much greater decrease in deep T_b of the wild-type mice than that observed in the study by Iida et al. (2005): 14.2 ± 1.1 versus $1.2 \pm 0.5^\circ\text{C}$. On the other hand, our results agree with those of Motter and Ahern (2008), who used stronger cooling (a 2.0–3.4°C decrease in T_b of wild-type mice) than Iida et al. (2005) and found that *Trpv1* KO mice could defend their deep T_b against environmental cold somewhat better than their wild-type counterparts. Whether the slightly enhanced thermogenic capacity of the *Trpv1* KO mice observed in this experiment was due to non-shivering or shivering thermogenesis, or both, is unknown.

Peripheral administration of an exogenous TRPV1 agonist decreases stress-induced locomotion via an action on the TRPV1 channel

After finding that *Trpv1* KO mice were hyperactive (Fig. 3), we tested whether RTX, an ultrapotent exogenous TRPV1 agonist, decreases the gross locomotor activity. For this, we administered RTX intraperitoneally to *Trpv1*^{-/-} mice with a C57BL/6x129 genetic background and to two strains of *Trpv1*^{+/+} mice, C57BL/6x129 and C57BL/6. These experiments (and all experiments to follow) were performed in the telemetry setup. Because the expected effect of RTX was a decrease in the gross locomotor activity, RTX or its vehicle was administered acutely by briefly restricting the animal and pricking it with a needle (see Materials and Methods, Drugs and drug administration). In this paradigm, the handling and needle pricking associated with drug administration elevate the low activity typical for habituated mice during

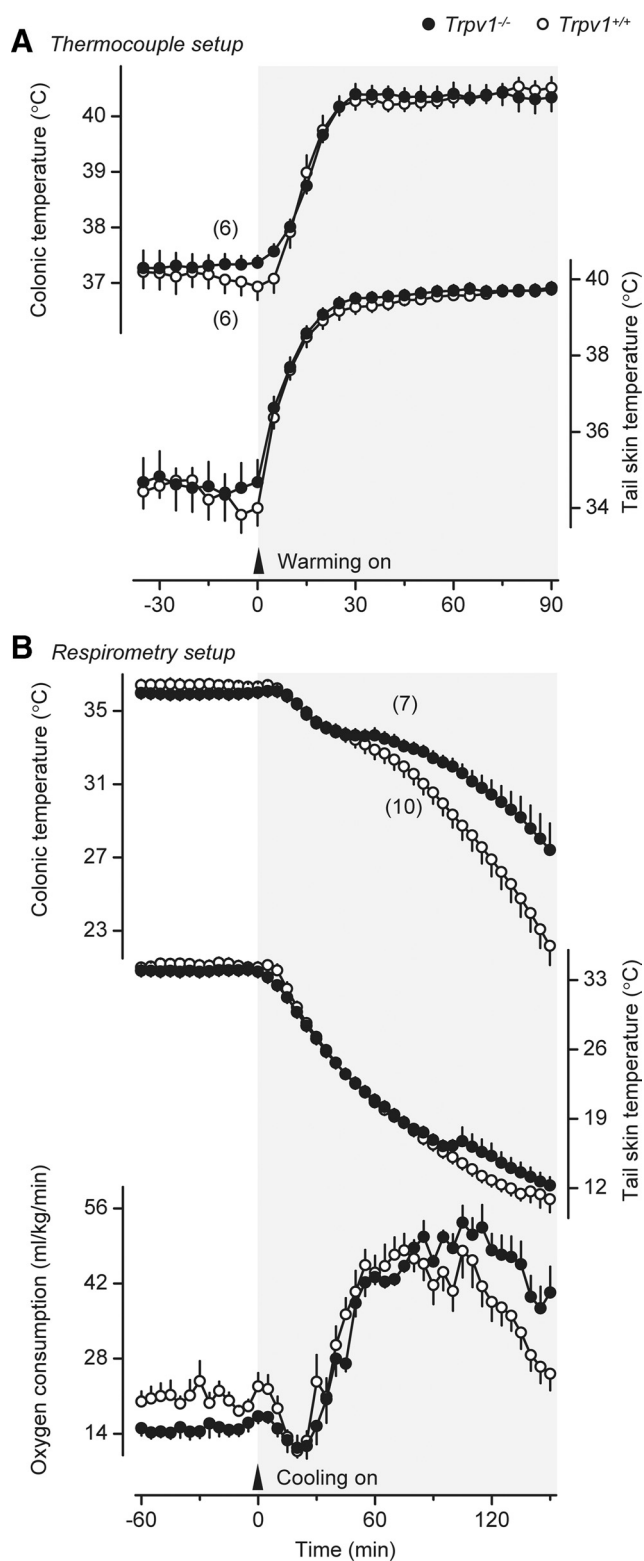


Figure 5. Thermoeffector and deep T_b responses of *Trpv1* KO and genetically unaltered confined mice to severe heat exposure (A) and severe cold exposure (B). During heat exposure, T_a was first raised from 31.0°C to 39.0°C at a rate of ~0.3°C/min and then maintained at 39.0°C until the end of the experiment. Deep T_b (colonic) and tail skin vasodilation (T_{sk}) responses of the two genotypes to heat exposure were identical. During cold exposure, T_a was decreased from 33.0°C to 5.0°C at a mean rate of 0.2°C/min. In response to cold exposure, *Trpv1* KO mice maintain an increased thermogenesis (V_{O_2}) longer, thus better defending their T_b against severe cold.

the light phase. The well known ability of RTX to decrease T_b (for review, see Romanovsky et al., 2009) was also evaluated, and to allow the animals to readily decrease their T_b , the experiments were performed at a slightly subneutral T_a of 26.0°C. The administration of the vehicle caused moderate hyperactivity and typical stress hyperthermia in all genotypes tested (Fig. 6). RTX (200 ng/kg, i.p.) blocked both the hyperactivity and hyperthermia responses in $Trpv1^{+/+}$ C57BL/6 and C57BL/6x129 mice ($p < 0.0001$ for both responses in both strains) (Fig. 6A,B), even though the low dose of RTX used did not cause hypothermia. These results agree with studies showing that capsaicin, another exogenous TRPV1 agonist, decreases locomotor activity in rats and mice (Di Marzo et al., 2000, 2001; Proulx et al., 2005; Lee et al., 2006), and that both RTX (at higher doses) and capsaicin cause hypothermia in many mammalian species [for review, see Romanovsky et al. (2009)]. In the present study, the same dose of RTX that caused the anti-hyperkinetic and anti-hyperthermic effects in the control mice did not affect the stress-induced changes in T_{ab} or locomotor activity in $Trpv1$ KO mice (Fig. 6C). These results indicate that peripherally administered RTX decreases stress-induced locomotor activity and hyperthermia in mice by acting on TRPV1 channels. It was important to demonstrate an involvement of TRPV1 channels, because some effects of exogenous TRPV1 agonists (Lundbaek et al., 2005), including thermoregulatory effects (Dogan et al., 2004; Nikami et al., 2008), are not TRPV1 mediated.

Peripheral administration of an endogenous TRPV1 agonist decreases stress-induced locomotion via an action on the TRPV1 channel

We then tested whether AEA, an endocannabinoid with a full agonistic activity against TRPV1, affects T_{ab} and stress-induced locomotion in a way similar to RTX. In this experiment, the acute intraperitoneal injection of the vehicle resulted in an increase in the locomotor activity, similar to those shown in Figure 6, but did not cause stress hyperthermia. The blunted effect of stress on T_{ab} was probably due to the fact that a large volume of a room-temperature vehicle was used to deliver the high dose of AEA: 30 ml/kg (~0.9 ml per mouse) in this experiment (Fig. 7) as compared to 3.3 ml/kg (~0.1 ml per mouse) in the RTX experiment (Fig. 6). As compared to its vehicle, AEA (15 mg/kg, i.p.) significantly decreased T_{ab} and strongly attenuated locomotor activity (suppressed stress hyperkinesia) in $Trpv1^{+/+}$ mice of both strains: C57BL/6 ($p < 0.0001$ for T_{ab} ; $p < 0.05$ for locomotor activity) (Fig. 7A) and C57BL/6x129 ($p < 0.05$ for T_{ab} ; $p < 0.01$ for locomotor activity) (Fig. 7B). These results agree with the reported hypothermic and hypokinetic effects of AEA, administered to rats and mice at high doses (Crawley et al., 1993; Frider and Mechoulam, 1993; Smith et al., 1994; Adams et al., 1998; Watanabe et al., 1999; Wiley et al., 2006; Wise et al., 2007). How-

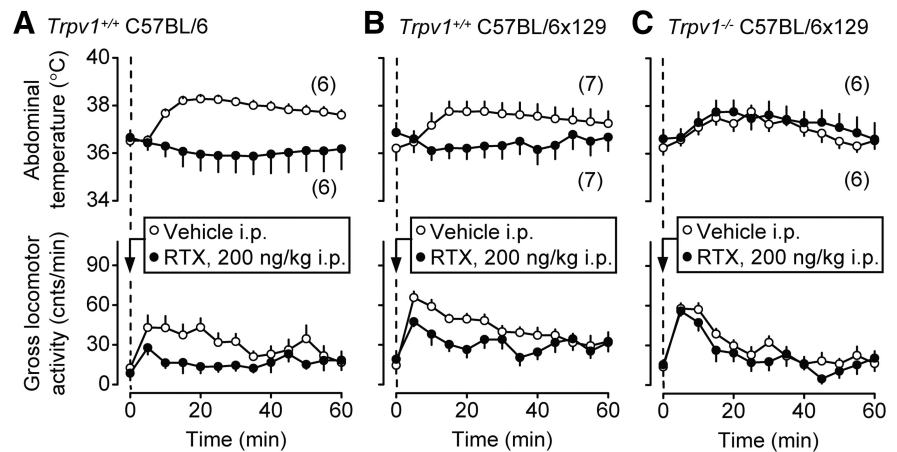


Figure 6. Intrapertoneal RTX (200 ng/kg) attenuates the injection-induced hyperthermia and hyperkinesia in $Trpv1^{+/+}$ mice of two strains, C57BL/6 (A) and C57BL/6x129 (B), but not in $Trpv1^{-/-}$ C57BL/6x129 mice (C). These experiments and those presented in Figures 7 and 9 were performed in the telemetry setup at a subneutral T_a of 26.0°C.

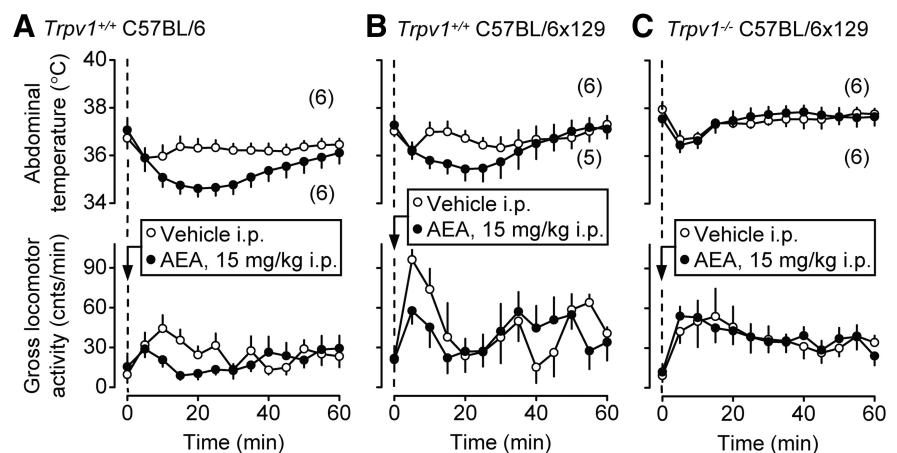


Figure 7. Intrapertoneal AEA (15 mg/kg) causes hypothermia and attenuates the injection-induced hyperkinesia in $Trpv1^{+/+}$ mice of two strains, C57BL/6 (A) and C57BL/6x129 (B), but not in $Trpv1^{-/-}$ C57BL/6x129 mice (C).

ever, none of these effects occurred when AEA was injected in $Trpv1^{-/-}$ C57BL/6x129 mice (Fig. 7C). Even though AEA also acts as a full agonist at the cannabinoid-1 receptor (Vogel et al., 1993) and as a partial agonist at the cannabinoid-2 receptor (Gonsiorek et al., 2000), the complete absence of both T_b -decreasing and activity-decreasing effects of AEA in $Trpv1$ KO mice shows that cannabinoid receptors do not mediate the effects studied. This is the first observation showing directly that AEA suppresses deep T_b and locomotor activity by acting on the TRPV1 channel.

Peripheral administration of a selective TRPV1 antagonist produces hyperkinesia via an action on the TRPV1 channel

Next, we studied the effect of AMG0347, a TRPV1 antagonist, on deep T_b and locomotor activity of $Trpv1^{-/-}$ and $Trpv1^{+/+}$ C57BL/6x129 mice. Based on the results with TRPV1 agonists (Figs. 6, 7), we expected the antagonist to cause an increase in the locomotor activity. To study the expected increase, we avoided inducing stress hyperkinesia and infused AMG0347 or its vehicle in a nonstressful manner, through a preimplanted intraperitoneal catheter, from outside of the climatic chamber. Because the expected thermal effect was hyperthermia (Steiner et al., 2007; Garami et al., 2010), these experiments were conducted at T_a of

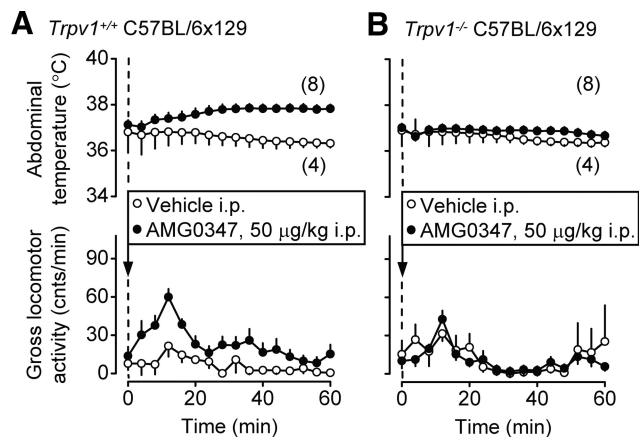


Figure 8. Intrapерitoneal AMG0347 (50 μ g/kg) causes hyperthermia and locomotor hyperactivity in wild-type mice (A) but not in *Trpv1* KO mice (B). These experiments were performed in the telemetry setup at a neutral T_{a} of 31.0°C.

31.0°C, which is neutral for both *Trpv1* KO and control mice in the telemetry setup (Table 1). As compared to its vehicle, AMG0347 (50 μ g/kg, i.p.) caused hyperthermia and hyperkinesia in *Trpv1*^{+/+} mice ($p < 0.0001$ for both) (Fig. 8A). Whereas it is well known that TRPV1 antagonists cause hyperthermia (for reviews, see Gavva, 2008; Romanovsky et al., 2009), the observed increase in the locomotor activity was an unexpected finding, because earlier studies in rats with several TRPV1 antagonists reported no changes in the locomotor activity (Gavva et al., 2005; Cui et al., 2006; Drizin et al., 2006; Mills et al., 2008). However, the TRPV1 antagonists in all these studies were administered in a stressful way (often as intragastric gavage), and the resultant stress-induced hyperkinesia could have masked the short-lived and modest increase in the locomotor activity seen in the present study. The same dose of AMG0347 that caused hyperthermia and hyperkinesia in the control mice affected neither T_{ab} nor gross locomotor activity in *Trpv1* KO mice (Fig. 8B). Whereas it has been shown in our previous studies that TRPV1 antagonists cause hyperthermia by acting on TRPV1 channels (Steiner et al., 2007; Garami et al., 2010), the present study is the first to demonstrate a hyperkinetic effect for AMG0347 and to show that this effect occurs due to an action at the TRPV1 channel.

A TRPV1 agonist suppresses stress-induced locomotion by acting outside the brain

We then attempted to determine whether the anti-hyperkinetic response to intraperitoneal RTX (Fig. 6) occurs due to an action inside or outside the brain. A very low dose of RTX, 20 ng/kg, was used in this experiment and administered either intraperitoneally or into the lateral brain ventricle. When administered intraperitoneally, this dose attenuated the injection-induced hyperthermia and the locomotor response ($p < 0.0001$ for both) (Fig. 9A). However, the same dose of RTX administered intracerebroventricularly affected neither parameter (Fig. 9B). These data suggest that RTX affects locomotion by acting outside the blood–brain barrier. It should be noted that the low doses of RTX used in the present study, 20 ng/kg (Fig. 9) and 200 ng/kg (Fig. 6), did not cause a typical hypothermic response, but did decrease the injection-associated rise in T_{b} . Such an action on T_{b} is likely to be secondary to the decrease in locomotor activity. At higher doses, RTX readily causes marked hypothermia (de Vries and Blumberg, 1989; Romanovsky et al., 2009), and the marked hypother-

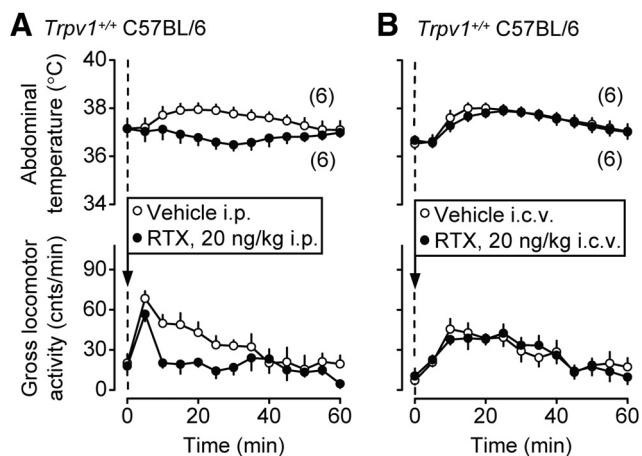


Figure 9. The intraperitoneal (A), but not intracerebroventricular (B), administration of RTX at a dose of 20 ng/kg attenuates the injection-induced hyperthermia and hyperkinesia in *Trpv1*^{+/+} C57BL/6 mice.

mic response to RTX is thought to be due to a central, rather than peripheral, action [for review, see Romanovsky et al. (2009)].

Aged *Trpv1* KO mice are heavier than genetically unaltered controls

As a side finding, we noticed that, with age, *Trpv1* KO mice of both sexes became heavier than their *Trpv1*^{+/+} counterparts (Fig. 10). For example, at the age of 8 months, the body mass of the male *Trpv1* KO mice was 14% higher than that of the age-matched male controls: 49 ± 1 versus 43 ± 1 g ($p < 0.0001$). The two heaviest mice in our colony were *Trpv1* KO males, who had a body mass of 59 g (at the age of 8 months) and 58 g (at the age of 14 months). By the time we discovered that aged *Trpv1* KO mice were significantly heavier than their wild-type counterparts, Amgen had terminated its colony, which made obtaining any additional measures (the amount and distribution of fat, blood lipids) impossible. Even though we did not measure the amount of fat, the aged *Trpv1* KO mice looked obese, rather than proportionally large. They had larger bellies, a symptom consistent with accumulation of visceral fat, a generally accepted hallmark of aging (Huffman and Barzilai, 2009). We also noticed both a large amount of visceral fat and a thick layer of subcutaneous fat while performing surgeries on older *Trpv1* KO mice for a different study (S. P. Wanner and A. A. Romanovsky, unpublished observations). The observed association of hyperactivity (recorded at a younger age) with overweight (recorded at an older age) seems paradoxical, but a similar relationship was reported for a group of healthy humans: those individuals who were more physically active when they were young showed a higher mass gain with age (Westerterp and Plasqui, 2009). Based on the present observation, it is tempting to speculate that TRPV1 channels protect from aging-associated obesity. From the thermoregulatory point of view, the increased body mass found in aged *Trpv1* KO mice may have an insulating role, similar to that played by subcutaneous fat in animals living in cold climates (Blix and Steen, 1979).

Discussion

In agreement with previous studies (Szelényi et al., 2004; Iida et al., 2005), we have found no profound alterations in basal T_{b} in *Trpv1* KO mice (Fig. 2). We have also confirmed that, compared to their *Trpv1*^{+/+} counterparts, *Trpv1*^{-/-} mice have a slightly higher magnitude of circadian fluctuations in T_{b} . The main thermoregulatory abnormality of *Trpv1* KO mice appears to be not an

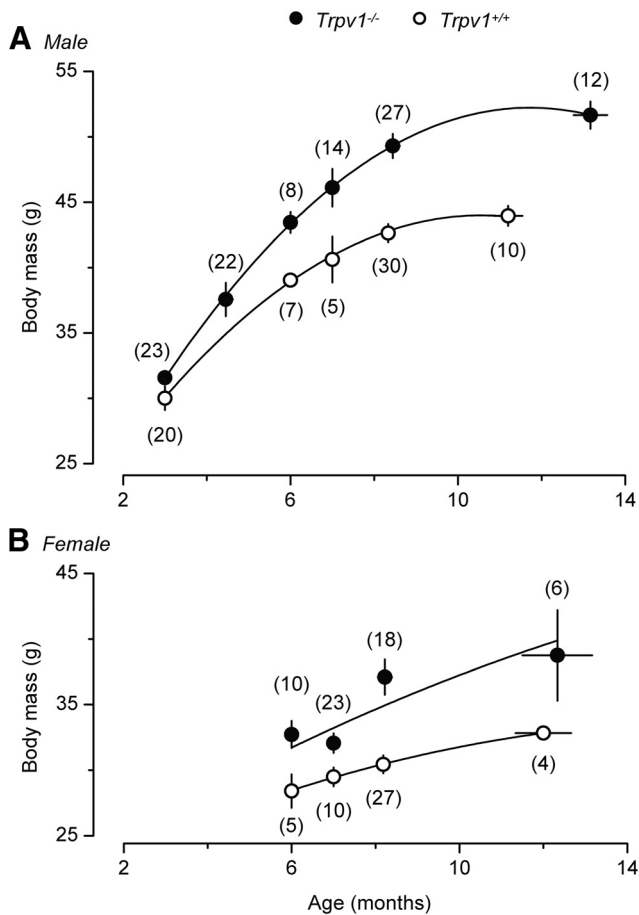


Figure 10. With age, both male (**A**) and female (**B**) *Trpv1* KO mice become heavier than their age-matched controls.

altered level of T_b , but a different pattern of thermoeffector used to regulate T_b under various thermal, housing, and restraint conditions. *Trpv1* KO mice were consistently hypometabolic (had a lower V_{O_2}) and preferred a lower T_a than controls (Fig. 3). These thermoeffector changes tend to decrease T_b . At the same time, the KO mice expressed two thermoeffector activities aimed at increasing T_b . First, they had more pronounced tail skin vasoconstriction (Fig. 3B) and, in agreement with this, had a higher TNZ (Fig. 4). Second, they expressed strong hyperkinesia with the average locomotion velocity during the second half of the inactive phase exceeding that of wild-type mice during the active phase (Fig. 3A).

This finding of increased locomotor activity of *Trpv1* KO mice deserves a separate discussion, as it seems to contradict several studies showing that the deletion of the *Trpv1* gene causes no changes in locomotion (Caterina et al., 2000; Davis et al., 2000; Marsch et al., 2007). However, all these studies used much shorter observation periods, sometimes as short as 15 min. Furthermore, even though these studies found no statistically significant differences in the locomotor activity of *Trpv1* KO mice, some of them showed strong tendencies that were in agreement with the present results. For example, Davis et al. (2000) found that *Trpv1* KO mice tended to have higher scores in several activity tests. In the hole board test for exploratory behavior, the activity of *Trpv1* KO mice exceeded that of wild-type mice by 92% ($p = 0.12$). An increased activity of *Trpv1* KO mice was also observed by Marsch et al. (2007) in several tests for anxiety-related behaviors. In these tests, *Trpv1* KO mice adapted to experimental conditions faster and expressed exploratory behav-

iors associated with a higher locomotor activity. However, other studies have found no involvement of TRPV1 channels in anxiety behaviors (Bitencourt et al., 2008; Panlilio et al., 2009). The increased spontaneous locomotion observed in our study is also unlikely to be due to changes in anxiety or exploratory behavior, because the mice were extensively adapted to experimental conditions and observed over long periods of time. Whether the increased locomotion relates to changes in the sleep pattern is unknown, but TRPV1 antagonists do not seem to affect sleep (Takeda et al., 2008).

Because their autonomic thermoregulatory responses showed no attenuation in our study and in studies by others (Széleányi et al., 2004; Iida et al., 2005; Motter and Ahern, 2008), we directed our attention to the behavioral responses: the selection of T_a , which is the classic example of thermoregulatory behavior, and the gross locomotor activity, which is viewed by many authors as a thermoregulatory effector in small rodents. In the thermogradient apparatus, we saw that *Trpv1* KO mice preferred a lower T_a and were hyperactive as compared to the controls (Fig. 3). Similar to how humans prefer to exercise in a cooler environment, experimental rodents select a lower T_a when their activity is higher. Such an adjustment of the preferred T_a accompanies the increase in the locomotor activity of rats (Gordon, 1994) and mice (Fig. 3) at the transition from the inactive (light) phase to the active (dark) phase. A similar adjustment accompanies the exploratory behavior of rats in a thermogradient apparatus when the animals are not adapted to the apparatus [for discussion, see Almeida et al. (2006)]. Having excluded profound deficiencies in the two major autonomic effectors directly (Fig. 5) and knowing that a decrease in the thermopreferendum often occurs secondarily to an increase in locomotor activity, we are tempted to speculate that the increased locomotion may be one of the “primary” symptoms of the *Trpv1* KO phenotype. We then focused the second part of the study on locomotor activity.

We asked whether pharmacological manipulations with the activity of TRPV1 channels would affect the locomotor activity (and also T_b). First, we showed that RTX (an exogenous TRPV1 agonist) and AEA (an endogenous TRPV1 agonist) both attenuated stress-induced hyperactivity in *Trpv1*^{+/+} mice of two strains (Figs. 6, 7). This effect agrees well with the reported hypokinetic action of these and other TRPV1 agonists in several different tests (Di Marzo et al., 2001; Proulx et al., 2005; Wiley et al., 2006; Wise et al., 2007). Next, we studied the responses to RTX and AEA in *Trpv1* KO mice. By showing that the locomotor activity response was unaffected by these TRPV1 agonists in *Trpv1* KO mice, we have confirmed that the anti-hyperkinetic effect of either agonist occurs via an action on TRPV1. This is in agreement with the finding that the AEA-induced decrease in locomotor activity of rats is blocked by TRPV1 antagonists (de Lago et al., 2004; Lee et al., 2006; Tzavara et al., 2006). In the next experiment, we used AMG0347, a highly potent and selective TRPV1 antagonist. In addition to causing the well characterized hyperthermic effect (Steiner et al., 2007; Garami et al., 2010), a nonstressful intraperitoneal administration of AMG0347 also increased the locomotor activity in *Trpv1*^{+/+} mice (Fig. 8). However, AMG0347 did not increase locomotion in *Trpv1* KO mice, thus indicating that the hyperkinetic effect of AMG0347 occurs via an action on TRPV1. Hence, our results with RTX, AEA, and AMG0347 support the hypothesis that TRPV1 channels tonically suppress the general locomotor activity.

We then asked whether the TRPV1 channels involved are located inside or outside the brain. To answer this question, we injected a very low dose of RTX (20 ng/kg) either intraperitoneally or into the lateral cerebral ventricle. The intraperitoneal ad-

ministration was effective in decreasing the injection-associated locomotion, whereas the intracerebroventricular administration was not (Fig. 9), thus suggesting that RTX causes its anti-hyperkinetic activity by acting outside the blood–brain barrier. Such a peripheral action agrees with the predominant location of TRPV1 channels on polymodal sensory neurons in the dorsal-root and nodose ganglia (Szallasi et al., 1995; Caterina et al., 1997; Tominaga et al., 1998). These neurons are activated by a variety of stimuli and are thought to modulate a wide array of autonomic and behavioral functions (Caterina and Julius, 2001; Inoue et al., 2006; Nilius et al., 2007; Szallasi et al., 2007; Sharif-Naeini et al., 2008; Romanovsky et al., 2009). Tonic activation of peripheral TRPV1 channels has been shown to inhibit thermogenesis and heat retention in the study by Steiner et al. (2007), to modulate spinal locomotor networks in the study by Mandadi et al. (2009), and to inhibit the general locomotor activity in the present work.

As a side observation, we have found that, with age, *Trpv1* KO mice of either sex (maintained on a regular diet) become heavier than their wild-type counterparts (Fig. 10). This observation seems to contradict studies by Davis et al. (2000), Rong et al. (2004), and Zhang et al. (2007), who found no changes in the body mass of *Trpv1* KO mice compared to controls, when maintained on a regular or high-fat diet. It also contradicts the study by Motter and Ahern (2008), in which *Trpv1* KO mice were found less prone than wild-type controls to become obese on a high-fat diet. However, all above-mentioned studies used young mice with the body mass in a 10–30 g range (on a regular diet). In this body mass range, the intergenotype difference in our study was also small, but with age (we observed the mice up to the age of 14 months), the difference increased (Fig. 10). Interestingly, the obesity-protective role of TRPV1 channels has been proposed (Zhang et al., 2007; Suri and Szallasi, 2008) and is supported by two lines of evidence. First, Zhang et al. (2007) detected TRPV1 channels in preadipocytes, as well as in visceral adipose tissue from mice and humans. These authors demonstrated TRPV1 downregulation during regular adipogenesis and a reduced TRPV1 expression in visceral adipose tissue from obese mice and humans. Second, a long-term administration of capsaicin or capsinoids (nonpungent, capsaicin-related TRPV1 agonists) has been repeatedly shown to suppress visceral fat accumulation, induce thermogenesis, and prevent an increase in the body mass in laboratory animals and humans (Kawabata et al., 2006; Zhang et al., 2007; Snitker et al., 2009). Further studies of the role of the TRPV1 channel in obesity seem warranted.

In conclusion, the first part of the present study shows that *Trpv1* KO mice possess a distinct thermoregulatory phenotype, which includes hypometabolism, enhanced skin vasoconstriction, preference for a lower T_{a} , and an increased locomotor activity. The second part of our study shows that TRPV1 agonists and antagonists decrease and increase, respectively, the locomotor activity by acting on TRPV1 channels. For agonists, their effect on locomotion is due to an action outside the brain. We propose that TRPV1-mediated signals from the periphery tonically suppress general locomotor activity. Whether such suppression occurs due to a direct action on the locomotor system or indirectly (e.g., by affecting motivation or vigilance state) is a topic for future studies. The nature of the TRPV1-mediated signals that suppress locomotion also remains to be elucidated.

Notes

The curves of gross locomotor activity measured simultaneously by intraperitoneal telemetry probes and by external motion detectors in mice treated with different drugs are presented in supplemental

Figure 1 posted at <http://www.feverlab.net/pages/publicationpdfs/supplementJN2011.pdf>. This material has not been peer reviewed.

References

- Adams IB, Compton DR, Martin BR (1998) Assessment of anandamide interaction with the cannabinoid brain receptor: SR 141716A antagonism studies in mice and autoradiographic analysis of receptor binding in rat brain. *J Pharmacol Exp Ther* 284:1209–1217.
- Almeida MC, Steiner AA, Branco LG, Romanovsky AA (2006) Cold-seeking behavior as a thermoregulatory strategy in systemic inflammation. *Eur J Neurosci* 23:3359–3367.
- Berkley R, Jacobson E (1992) *Peppers: a cookbook*. New York: Simon and Schuster.
- Bitencourt RM, Pamplona FA, Takahashi RN (2008) Facilitation of contextual fear memory extinction and anti-anxiogenic effects of AM404 and cannabidiol in conditioned rats. *Eur Neuropsychopharmacol* 18:849–859.
- Blix AS, Steen JB (1979) Temperature regulation in newborn polar homeotherms. *Physiol Rev* 59:285–304.
- Brown D, Livesey G, Dauncey MJ (1991) Influence of mild cold on the components of 24 hour thermogenesis in rats. *J Physiol* 441:137–154.
- Caterina MJ, Julius D (2001) The vanilloid receptor: a molecular gateway to the pain pathway. *Annu Rev Neurosci* 24:487–517.
- Caterina MJ, Schumacher MA, Tominaga M, Rosen TA, Levine JD, Julius D (1997) The capsaicin receptor: a heat-activated ion channel in the pain pathway. *Nature* 389:816–824.
- Caterina MJ, Leffler A, Malmberg AB, Martin WJ, Trafton J, Petersen-Zeit KR, Koltzenburg M, Basbaum AI, Julius D (2000) Impaired nociception and pain sensation in mice lacking the capsaicin receptor. *Science* 288:306–313.
- Christoph T, Bahrenberg G, De Vry J, Englberger W, Erdmann VA, Frech M, Kögel B, Röhl T, Schiene K, Schröder W, Seibler J, Kurreck J (2008) Investigation of TRPV1 loss-of-function phenotypes in transgenic shRNA expressing and knockout mice. *Mol Cell Neurosci* 37:579–589.
- Crawley JN, Corwin RL, Robinson JK, Felder CC, Devane WA, Axelrod J (1993) Anandamide, an endogenous ligand of the cannabinoid receptor, induces hypomotility and hypothermia in vivo in rodents. *Pharmacol Biochem Behav* 46:967–972.
- Cui M, Honore P, Zhong C, Gauvin D, Mikusa J, Hernandez G, Chandran P, Gomtsyan A, Brown B, Bayburt EK, Marsh K, Bianchi B, McDonald H, Niforatos W, Neelands TR, Moreland RB, Decker MW, Lee CH, Sullivan JP, Faltynek CR (2006) TRPV1 receptors in the CNS play a key role in broad-spectrum analgesia of TRPV1 antagonists. *J Neurosci* 26:9385–9393.
- Davis JB, Gray J, Gunthorpe MJ, Hatcher JP, Davey PT, Overend P, Harries MH, Latcham J, Clapham C, Atkinson K, Hughes SA, Rance K, Grau E, Harper AJ, Pugh PL, Rogers DC, Bingham S, Randall A, Sheardown SA (2000) Vanilloid receptor-1 is essential for inflammatory thermal hyperalgesia. *Nature* 405:183–187.
- de Lago E, de Miguel R, Lastres-Becker I, Ramos JA, Fernández-Ruiz J (2004) Involvement of vanilloid-like receptors in the effects of anandamide on motor behavior and nigrostriatal dopaminergic activity: in vivo and in vitro evidence. *Brain Res* 1007:152–159.
- de Vries DJ, Blumberg PM (1989) Thermoregulatory effects of resiniferatoxin in the mouse: comparison with capsaicin. *Life Sci* 44:711–715.
- Di Marzo V, Breivogel C, Bisogno T, Melck D, Patrick G, Tao Q, Szallasi A, Razdan RK, Martin BR (2000) Neurobehavioral activity in mice of N-vanillyl-arachidonyl-amide. *Eur J Pharmacol* 406:363–374.
- Di Marzo V, Lastres-Becker I, Bisogno T, De Petrocellis L, Milone A, Davis JB, Fernandez-Ruiz JJ (2001) Hypolocomotor effects in rats of capsaicin and two long chain capsaicin homologues. *Eur J Pharmacol* 420:123–131.
- Dogan MD, Patel S, Rudaya AY, Steiner AA, Székely M, Romanovsky AA (2004) Lipopolysaccharide fever is initiated via a capsaicin-sensitive mechanism independent of the subtype-1 vanilloid receptor. *Br J Pharmacol* 143:1023–1032.
- Drizin I, Gomtsyan A, Bayburt EK, Schmidt RG, Zheng GZ, Perner RJ, DiDommenico S, Koenig JR, Turner SC, Jinkerson TK, Brown BS, Keddy RG, McDonald HA, Honore P, Wismer CT, Marsh KC, Wetter JM, Polakowski JS, Segreti JA, Jarvis MF, et al. (2006) Structure-activity studies of a novel series of 5,6-fused heteroaromatic ureas as TRPV1 antagonists. *Bioorg Med Chem* 14:4740–4749.
- Fride E, Mechoulam R (1993) Pharmacological activity of the cannabinoid

- receptor agonist, anandamide, a brain constituent. *Eur J Pharmacol* 231:313–314.
- Garami A, Shimansky YP, Pakai E, Oliveira DL, Gavva NR, Romanovsky AA (2010) Contributions of different modes of TRPV1 activation to TRPV1 antagonist-induced hyperthermia. *J Neurosci* 30:1435–1440.
- Gavva NR (2008) Body-temperature maintenance as the predominant function of the vanilloid receptor TRPV1. *Trends Pharmacol Sci* 29:550–557.
- Gavva NR, Tamir R, Qu Y, Klionsky L, Zhang TJ, Immke D, Wang J, Zhu D, Vanderah TW, Porreca F, Doherty EM, Norman MH, Wild KD, Bannon AW, Louis JC, Treanor JJ (2005) AMG 9810 [(E)-3-(4-t-butylphenyl)-N-(2,3-dihydrobenzo[b][1,4] dioxin-6-yl)acrylamide], a novel vanilloid receptor 1 (TRPV1) antagonist with antihyperalgesic properties. *J Pharmacol Exp Ther* 313:474–484.
- Gonsiorek W, Lunn C, Fan X, Narula S, Lundell D, Hipkin RW (2000) Endocannabinoid 2-arachidonoyl glycerol is a full agonist through human type 2 cannabinoid receptor: antagonism by anandamide. *Mol Pharmacol* 57:1045–1050.
- Gordon CJ (1994) 24-hour control of body temperature in rats. I. Integration of behavioral and autonomic effectors. *Am J Physiol* 267:R71–R77.
- Hori T (1984) Capsaicin and central control of thermoregulation. *Pharmacol Ther* 26:389–416.
- Huffman DM, Barzilay N (2009) Role of visceral adipose tissue in aging. *Biochim Biophys Acta* 1790:1117–1123.
- Hunt JL, Zaretsky DV, Sarkar S, Dimicco JA (2010) Dorsomedial hypothalamus mediates autonomic, neuroendocrine, and locomotor responses evoked from the medial preoptic area. *Am J Physiol Regul Integr Comp Physiol* 298:R130–R140.
- Iida T, Shimizu I, Nealen ML, Campbell A, Caterina M (2005) Attenuated fever response in mice lacking TRPV1. *Neurosci Lett* 378:28–33.
- Inoue R, Jensen LJ, Shi J, Morita H, Nishida M, Honda A, Ito Y (2006) Transient receptor potential channels in cardiovascular function and disease. *Circ Res* 99:119–131.
- Kanizsai P, Garami A, Solymár M, Szolcsányi J, Szélényi Z (2009) Energetics of fasting heterothermia in TRPV1-KO and wild type mice. *Physiol Behav* 96:149–154.
- Kawabata F, Inoue N, Yazawa S, Kawada T, Inoue K, Fushiki T (2006) Effects of CH-19 sweet, a non-pungent cultivar of red pepper, in decreasing the body weight and suppressing body fat accumulation by sympathetic nerve activation in humans. *Biosci Biotechnol Biochem* 70:2824–2835.
- Lee J, Di Marzo V, Brotchie JM (2006) A role for vanilloid receptor 1 (TRPV1) and endocannabinoid signalling in the regulation of spontaneous and L-DOPA induced locomotion in normal and reserpine-treated rats. *Neuropharmacology* 51:557–565.
- Lesnikov VA, Tsvetkova IP (1985) Stereotaxic coordinates of the mouse hypothalamus (in Russian). *Fiziol Zh SSSR Im I M Sechenova* 71:798–804.
- Lundbaek JA, Birn P, Tape SE, Toombes GE, Søgaard R, Koeppel RE 2nd, Gruner SM, Hansen AJ, Andersen OS (2005) Capsaicin regulates voltage-dependent sodium channels by altering lipid bilayer elasticity. *Mol Pharmacol* 68:680–689.
- Mandadi S, Nakanishi ST, Takashima Y, Dhaka A, Patapoutian A, McKemy DD, Whelan PJ (2009) Locomotor networks are targets of modulation by sensory transient receptor potential vanilloid 1 and transient receptor potential melastatin 8 channels. *Neuroscience* 162:1377–1397.
- Marsch R, Foeller E, Rammes G, Bunck M, Kössl M, Holsboer F, Ziegler-Schäfer W, Landgraf R, Lutz B, Wotjak CT (2007) Reduced anxiety, conditioned fear, and hippocampal long-term potentiation in transient receptor potential vanilloid type 1 receptor-deficient mice. *J Neurosci* 27:832–839.
- McAllen RM, Tanaka M, Ootsuka Y, McKinley MJ (2010) Multiple thermoregulatory effectors with independent central controls. *Eur J Appl Physiol* 109:27–33.
- Mills C, McMackin M, Jaffe R, Yu J, Zininberg E, Slee D, Gogas K, Bradbury M (2008) Effects of the transient receptor potential vanilloid 1 antagonist A-425619 on body temperature and thermoregulation in the rat. *Neuroscience* 156:165–174.
- Morrison SF, Nakamura K, Madden CJ (2008) Central control of thermogenesis. *Exp Physiol* 93:773–797.
- Motter AL, Ahern GP (2008) TRPV1-null mice are protected from diet-induced obesity. *FEBS Lett* 582:2257–2262.
- Mount LE, Willmott JV (1967) The relation between spontaneous activity, metabolic rate and the 24 hour cycle in mice at different environmental temperatures. *J Physiol* 190:371–380.
- Nikami H, Mahmoud ME, Shimizu Y, Shiina T, Hirayama H, Iwami M, Dosoky RM, Ahmed MM, Takewaki T (2008) Capsaicin pretreatment attenuates LPS-induced hyperthermia through TRPV1-independent mechanisms in chicken. *Life Sci* 82:1191–1195.
- Nilius B, Owsianik G, Voets T, Peters JA (2007) Transient receptor potential cation channels in disease. *Physiol Rev* 87:165–217.
- Panlilio LV, Mazzola C, Medalie J, Hahn B, Justinova Z, Drago F, Cadet JL, Yasar S, Goldberg SR (2009) Anandamide-induced behavioral disruption through a vanilloid-dependent mechanism in rats. *Psychopharmacology (Berl)* 203:529–538.
- Proulx K, Cota D, Castañeda TR, Tschöp MH, D'Alessio DA, Tso P, Woods SC, Seeley RJ (2005) Mechanisms of oleylethanolamide-induced changes in feeding behavior and motor activity. *Am J Physiol Regul Integr Comp Physiol* 289:R729–R737.
- Romanovsky AA (2007) Thermoregulation: some concepts have changed. Functional architecture of the thermoregulatory system. *Am J Physiol Regul Integr Comp Physiol* 292:R37–R46.
- Romanovsky AA, Ivanov AI, Shimansky YP (2002) Selected contribution: ambient temperature for experiments in rats: a new method for determining the zone of thermal neutrality. *J Appl Physiol* 92:2667–2679.
- Romanovsky AA, Almeida MC, Garami A, Steiner AA, Norman MH, Morrison SF, Nakamura K, Burmeister JJ, Nucci TB (2009) The transient receptor potential vanilloid-1 channel in thermoregulation: a thermosensor it is not. *Pharmacol Rev* 61:228–261.
- Rong W, Hillsley K, Davis JB, Hicks G, Winchester WJ, Grundy D (2004) Jejunal afferent nerve sensitivity in wild-type and TRPV1 knockout mice. *J Physiol* 560:867–881.
- Rudaya AY, Steiner AA, Robbins JR, Dragic AS, Romanovsky AA (2005) Thermoregulatory responses to lipopolysaccharide in the mouse: dependence on the dose and ambient temperature. *Am J Physiol Regul Integr Comp Physiol* 289:R1244–R1252.
- Sharif-Naeini R, Ciura S, Zhang Z, Bourque CW (2008) Contribution of TRPV channels to osmosensory transduction, thirst, and vasopressin release. *Kidney Int* 73:811–815.
- Smart D, Gunthorpe MJ, Jerman JC, Nasir S, Gray J, Muir AI, Chambers JK, Randall AD, Davis JB (2000) The endogenous lipid anandamide is a full agonist at the human vanilloid receptor (hVR1). *Br J Pharmacol* 129:227–230.
- Smith PB, Compton DR, Welch SP, Razdan RK, Mechoulam R, Martin BR (1994) The pharmacological activity of anandamide, a putative endogenous cannabinoid, in mice. *J Pharmacol Exp Ther* 270:219–227.
- Snitker S, Fujishima Y, Shen H, Ott S, Pi-Sunyer X, Furuhashi Y, Sato H, Takahashi M (2009) Effects of novel capsinoid treatment on fatness and energy metabolism in humans: possible pharmacogenetic implications. *Am J Clin Nutr* 89:45–50.
- Steiner AA, Turek VF, Almeida MC, Burmeister JJ, Oliveira DL, Roberts JL, Bannon AW, Norman MH, Louis JC, Treanor JJ, Gavva NR, Romanovsky AA (2007) Nonthermal activation of transient receptor potential vanilloid-1 channels in abdominal viscera tonically inhibits autonomic cold-defense effectors. *J Neurosci* 27:7459–7468.
- Suri A, Szallasi A (2008) The emerging role of TRPV1 in diabetes and obesity. *Trends Pharmacol Sci* 29:29–36.
- Szallasi A, Nilsson S, Farkas-Szallasi T, Blumberg PM, Hökfelt T, Lundberg JM (1995) Vanilloid (capsaicin) receptors in the rat: distribution in the brain, regional differences in the spinal cord, axonal transport to the periphery, and depletion by systemic vanilloid treatment. *Brain Res* 703:175–183.
- Szallasi A, Cortright DN, Blum CA, Eid SR (2007) The vanilloid receptor TRPV1: 10 years from channel cloning to antagonist proof-of-concept. *Nat Rev Drug Discov* 6:357–372.
- Szélényi Z, Hummel Z, Szolcsányi J, Davis JB (2004) Daily body temperature rhythm and heat tolerance in TRPV1 knockout and capsaicin pretreated mice. *Eur J Neurosci* 19:1421–1424.
- Szentirmai E, Kapás L, Sun Y, Smith RG, Krueger JM (2010) Restricted feeding-induced sleep, activity, and body temperature changes in normal and preproghrelin-deficient mice. *Am J Physiol Regul Integr Comp Physiol* 298:R467–R477.
- Takeda Y, Ishida T, Tsutsui R, Toide K, Tanimoto-Mori S, Watanabe S, Kanai Y, Kamei C (2008) Studies on somnolence in the daytime caused by drugs used for neuropathic pain. *J Pharmacol Sci* 107:246–250.

- Tominaga M, Caterina MJ, Malmberg AB, Rosen TA, Gilbert H, Skinner K, Raumann BE, Basbaum AI, Julius D (1998) The cloned capsaicin receptor integrates multiple pain-producing stimuli. *Neuron* 21:531–543.
- Tzavara ET, Li DL, Moutsimilli L, Bisogno T, Di Marzo V, Phebus LA, Nomikos GG, Giros B (2006) Endocannabinoids activate transient receptor potential vanilloid 1 receptors to reduce hyperdopaminergic-related hyperactivity: therapeutic implications. *Biol Psychiatry* 59:508–515.
- Vogel Z, Barg J, Levy R, Saya D, Heldman E, Mechoulam R (1993) Anandamide, a brain endogenous compound, interacts specifically with cannabinoid receptors and inhibits adenylate cyclase. *J Neurochem* 61:352–355.
- Watanabe K, Matsunaga T, Nakamura S, Kimura T, Ho IK, Yoshimura H, Yamamoto I (1999) Pharmacological effects in mice of anandamide and its related fatty acid ethanolamides, and enhancement of cataleptogenic effect of anandamide by phenylmethylsulfonyl fluoride. *Biol Pharm Bull* 22:366–370.
- Weinert D, Waterhouse J (1998) Diurnally changing effects of locomotor activity on body temperature in laboratory mice. *Physiol Behav* 63:837–843.
- Westerterp KR, Plasqui G (2009) Physically active lifestyle does not decrease the risk of fattening. *PLoS One* 4:e4745.
- Wiley JL, Razdan RK, Martin BR (2006) Evaluation of the role of the arachidonic acid cascade in anandamide's in vivo effects in mice. *Life Sci* 80:24–35.
- Wise LE, Shelton CC, Cravatt BF, Martin BR, Lichtman AH (2007) Assessment of anandamide's pharmacological effects in mice deficient of both fatty acid amide hydrolase and cannabinoid CB1 receptors. *Eur J Pharmacol* 557:44–48.
- Zhang LL, Yan Liu D, Ma LQ, Luo ZD, Cao TB, Zhong J, Yan ZC, Wang LJ, Zhao ZG, Zhu SJ, Schrader M, Thilo F, Zhu ZM, Tepel M (2007) Activation of transient receptor potential vanilloid type-1 channel prevents adipogenesis and obesity. *Circ Res* 100:1063–1070.
- Zygmunt PM, Petersson J, Andersson DA, Chuang H, Sørsgård M, Di Marzo V, Julius D, Högestätt ED (1999) Vanilloid receptors on sensory nerves mediate the vasodilator action of anandamide. *Nature* 400:452–457.